



Performance software for poultry processing

Highlights

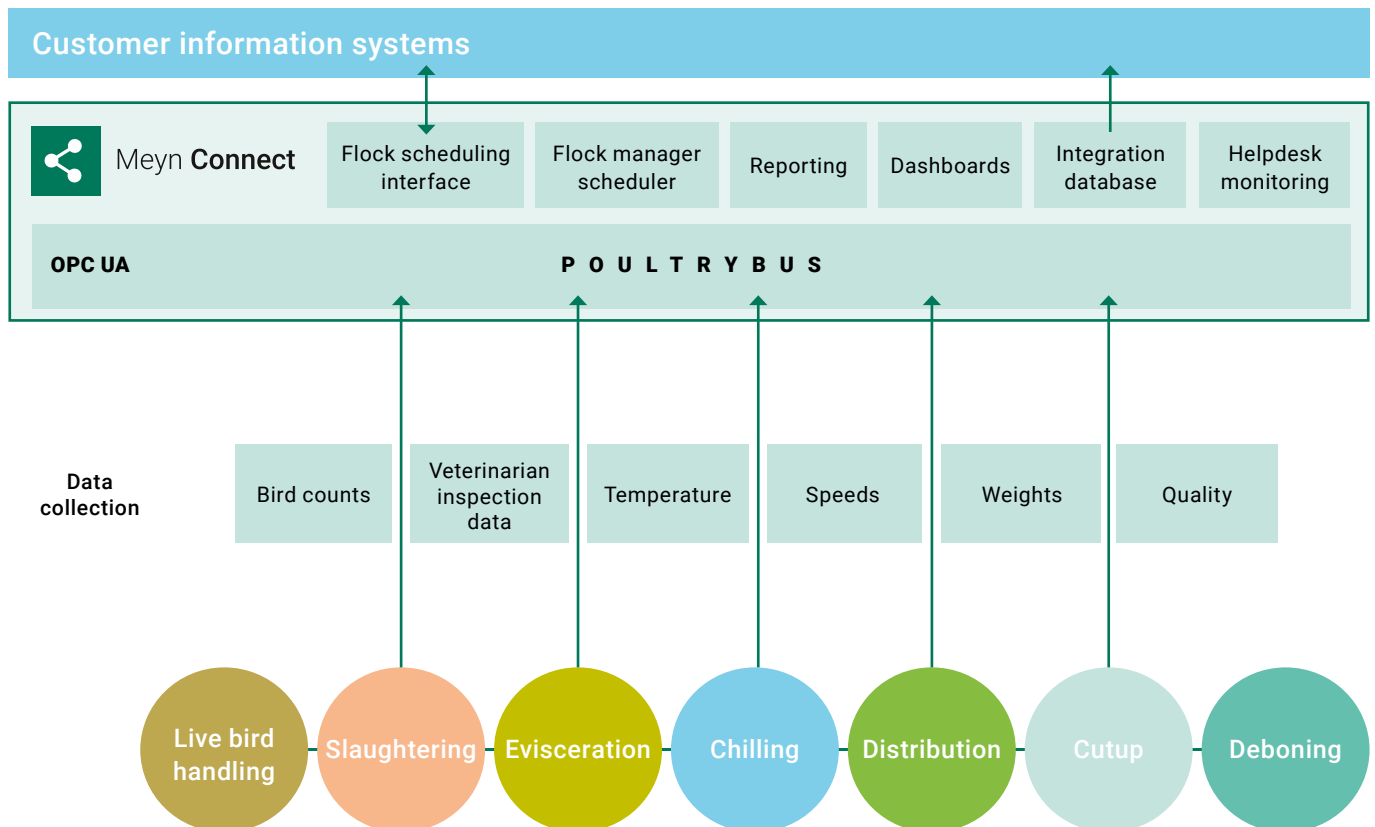
- Connect equipment to business software
- Easy access to available data
- Process monitoring
- Product traceability
- Reporting
- Dashboards



Meyn **Connect**

Meyn Connect

In a modern processing line, continuous monitoring and traceability is vital. Meyn Connect integrates the data collected from the processing line, into a single user-friendly application. The result is consistency and transparency throughout the entire process.



Every poultry processor has specific needs, and requires a different solution. Meyn Connect can be installed in a variety of configurations to meet these requirements.

Meyn Network module

Continuous availability of reliable and secure information is a must at every stage of poultry processing. The active network concept ensures information integrity and storage of (historical) data.

Data is easily exchanged between the Meyn equipment and the application via a so-called "Bus-structure", which is based on standards already proven in many industries. The application can connect to third-party applications, and a helpdesk monitor is included to help quickly identify the source of any connection issues.

Meyn Tracking manager module

Adds track and trace functionality, to monitor flocks and individual birds through the process.

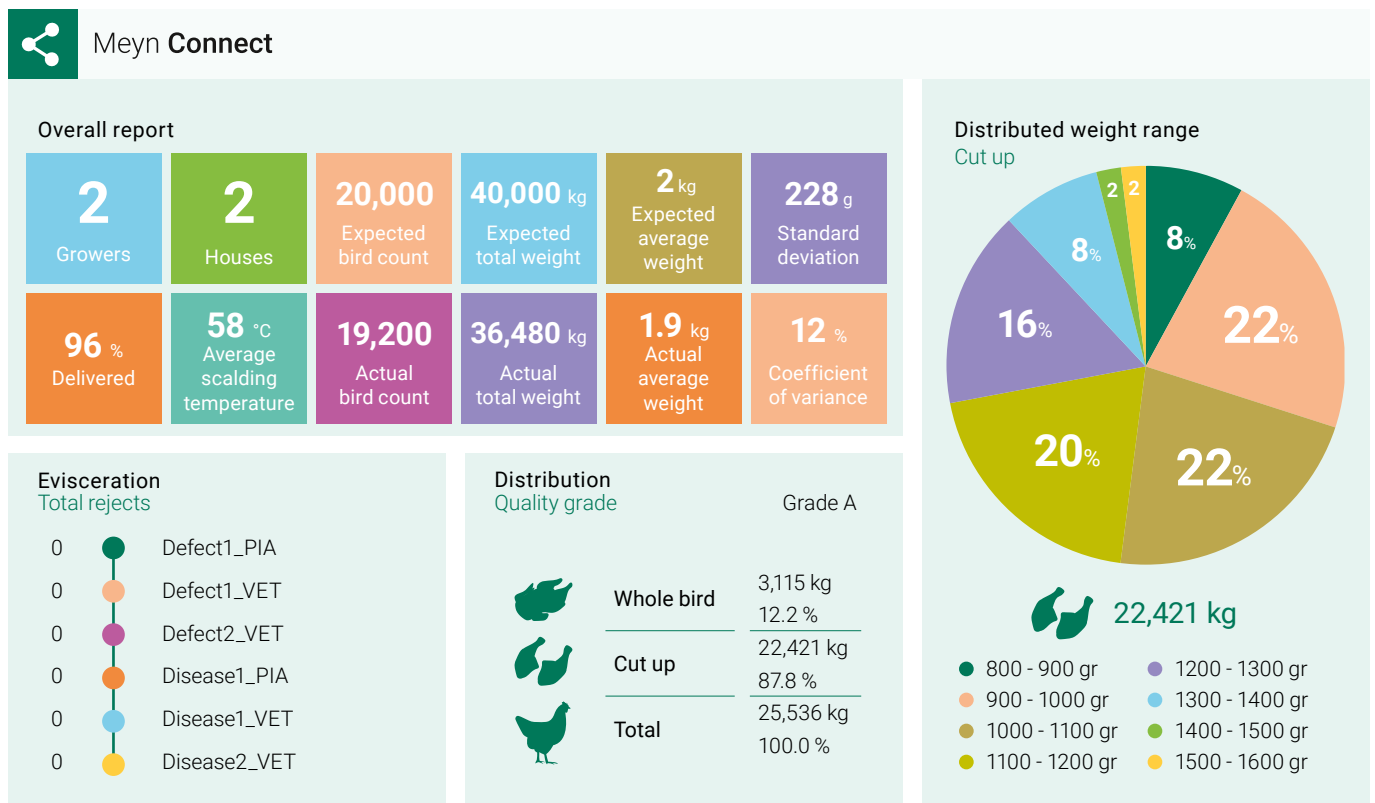
Meyn Distribution manager module

Meyn Distribution manager routes products to processing lines, packing stations, or downstream processes based on individual bird weight and bird quality data. This data is collected from the Meyn line weighers and grading systems. There are various types of counting and grading options available throughout the entire poultry processing line, including camera and weighing systems.

Meyn Flock scheduler module

Supports daily planning of flocks and the arrival of trucks, with the flexibility to match last-minute changes. It ensures the distribution of correct flock identification throughout the processing line. It also enables a daily download of long-term planning, which reduces the need for retyping, increases efficiency and eliminates errors.

Meyn Connect enables previously scattered information to be monitored in real time and combined into integrated reports. Processors can now invest their time in analyzing data, instead of gathering it. The Meyn Connect solution helps to optimize the whole production process.



An example of the information that can be generated from the Meyn Connect reporting module.

Meyn Connect in practice

Meyn Connect is a valuable tool for preparing your daily production schedules and sequencing them according to the actual order of lots. You get a clear insight into the stunning process, as well as automatically registering process data to comply with regulations. The system monitors the hanging process and indicates line efficiency (e.g. empty shackles).

During the slaughtering and evisceration process, all data relating to production parameters are instantly available, and equipment status is monitored. Chilling parameters, such as time and temperature, can be adjusted to optimize production conditions.

Throughout the whole process, individual birds are graded based on weight and quality. This can also be used to comply with animal welfare regulations, for example via a foot inspection system and digital grading system.

With multiple product counters in the line, secure product registration is ensured and product losses can be closely monitored. All the collected information can be used to generate detailed flock overviews.

“ Transparency in counting & weighing data proved we are paying too much to the farmer. ”

By up to 12,000 birds a day

Realtime information is now available, allowing you to optimize your operations and production. Operational excellence is within reach of every poultry processor.

Greenfield implementation

A detailed assessment of the project will ensure a smooth delivery and installation. Based on this assessment the application is pre-configured at Meyn. Implementation at the customer is then completed within a day. Connections with other software applications can be prepared off-site, using industrial standards. This means the integration is easy and without unwanted surprises.

**„ We saved 20 hrs
of administration
work per week. „**

Migrating existing applications

When migrating from an existing application such as Meyn Distribution manager M4000, the installation is performed in logical steps, with the focus on eliminating downtime. All aspects are overseen by Meyn service specialists, who check progress and give immediate support when questions arise.

Service packs

Service specialist backup can be arranged to support the highest levels of uptime.

Different combinations of on/off-site support are possible, tailored according to individual needs.

Service agreements can include the following options:

- Active monitoring
- Secure remote support
- Updates
- Secure system checks
- Data management for highest availability and integrity
- Lifecycle management, including hardware update plan

Remote support

Using Meyn Connect remote support options, preventive action is facilitated to monitor application health. This helps to minimize potential downtime and maximize operational uptime. Active access management ensures that you control who sees what, and when. This results in excellent data security.

Meyn Connect configurations

What does it include?	Range one	Range two	Integrated
	From live bird handling to chilling	From chilling to sorting	Expanded + Pro (incl. Bonus options)
Managed network, PoultryBus & Helpdesk monitor	Yes	Yes	Yes
Flock scheduler	Yes	Yes	Yes
Basic integration	Yes	Optional	Yes
Tracking manager	Yes	Optional	Yes
Distribution manager		Yes	Yes
Quality integration	Optional	Yes	Yes
Weighing integration	Optional	Yes	Yes
Dashboards	Yes	Yes	Yes
Reports	Optional	Optional	Optional
Flock scheduler interface	Optional	Optional	Optional
Integration database	Optional	Optional	Optional

Other configurations can be discussed according to needs.

Meyn Connect is a complete application, including hardware and software solutions, that collects data from poultry processing machines and integrates with poultry plant business applications. With Meyn Connect modules like Distribution manager and Flock scheduler, real-time processing information is available to manage the actual process. Meyn Connect gives consistency and transparency, offers many functionalities, and is supported by service contracts tailored to customer needs. Starting with an assessment, Meyn can help customers choose the best solution and implementation path.

The data is published, under reservation of all our rights, to the most recent information at the moment of publication and is subject to future modifications. Meyn reserves the right to modify the construction and the execution of its products at any time. No rights can be derived from this publication.

Version: 05
Revision date: 13-06-18

HEAD OFFICE

Meyn Food Processing Technology B.V.
Westeinde 6, 1511 MA Oostzaan (Amsterdam)
P.O. Box 16, 1510 AA Oostzaan
The Netherlands

CONTACT

Phone: +31 (0)20 2045 000
E-mail: sales@meyn.com
www.meyn.com

meyn