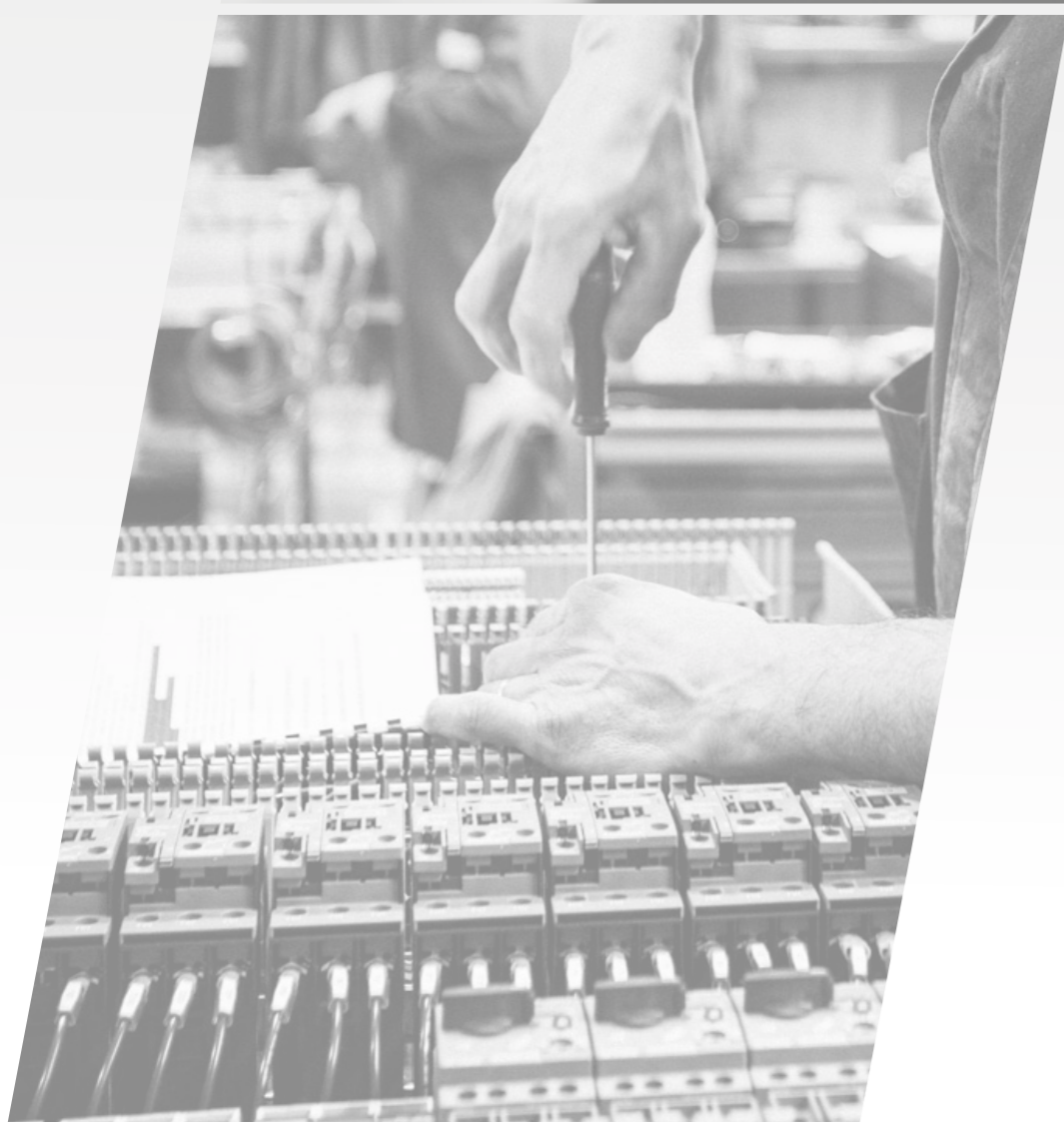
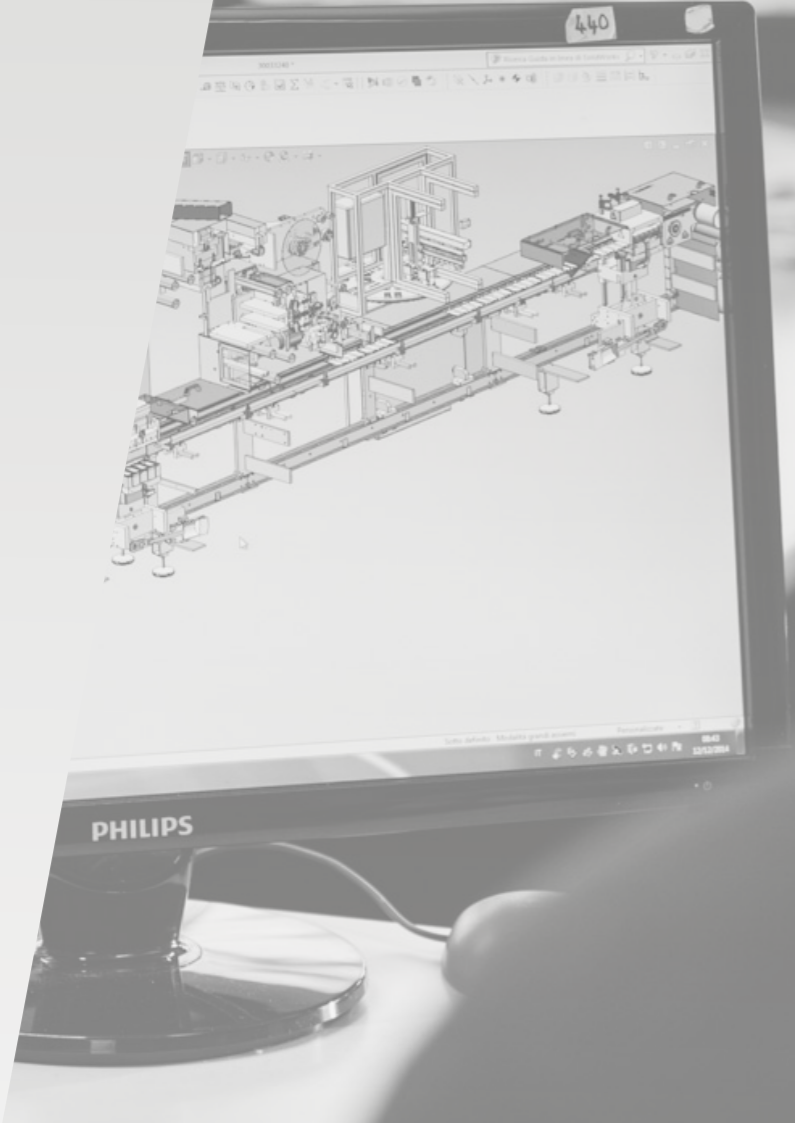


THERA 450



THERA 450

A combination of reliability,
simplicity and high performance,
enclosed in a solid and
compact structure.

MODEL 450 | THERA

EASY
access for maintenance
and service

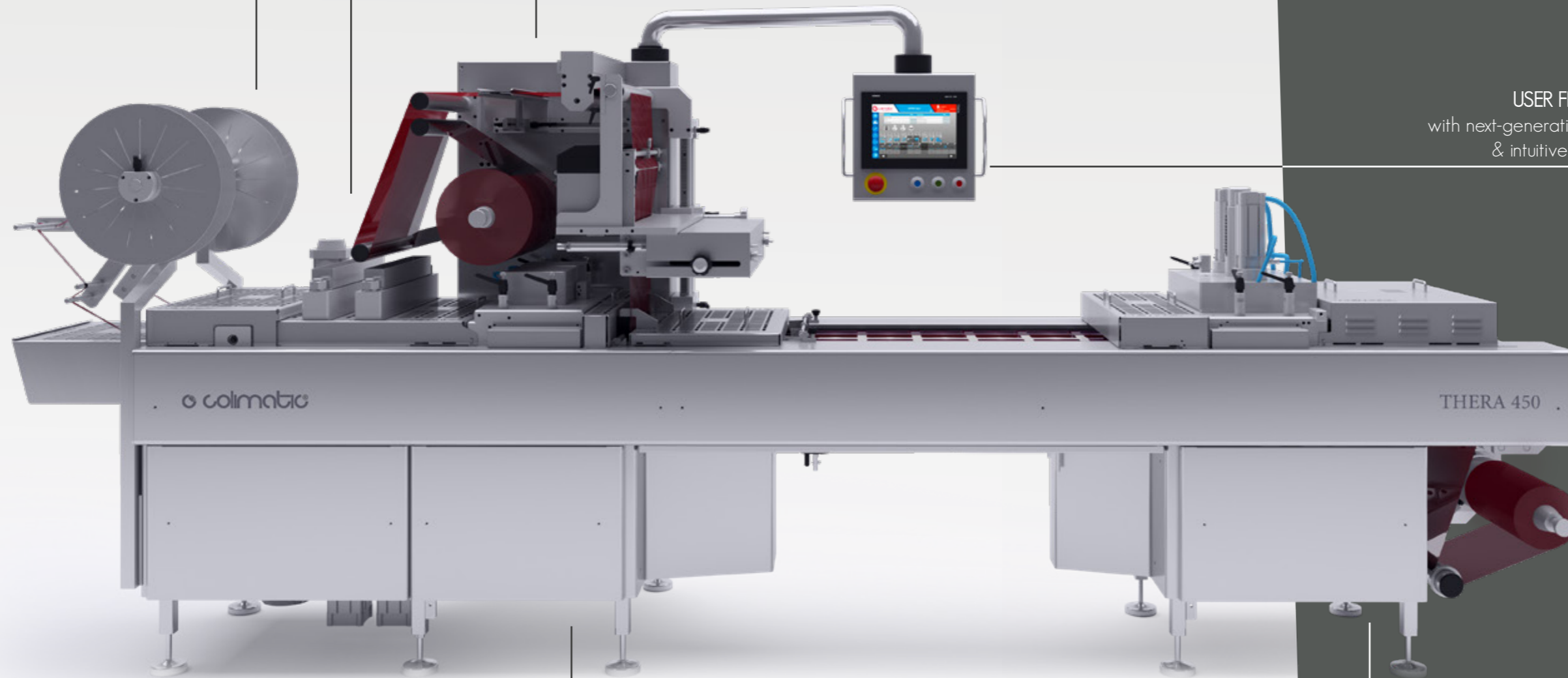
HYGIENE
Sloped surfaces for complete washdown



RELIABILITY
granted by its proven
high performances



USER FRIENDLY
with next-generation HMI
& intuitive options



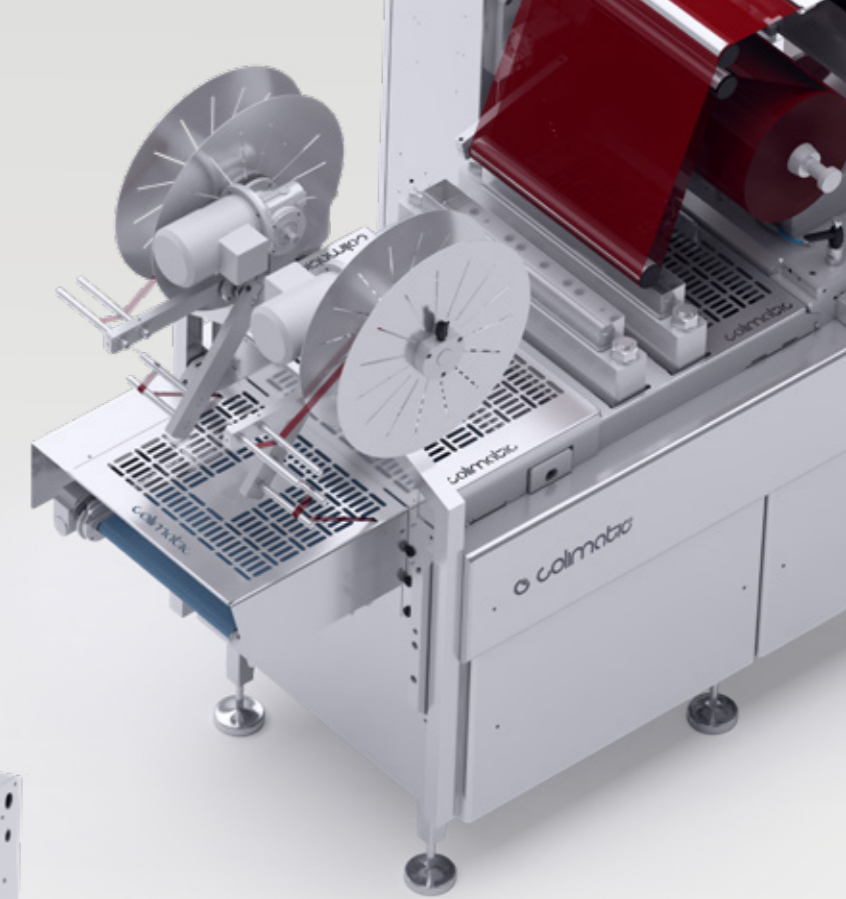
COMPATIBILITY
& Integration with automatic loading &
printing devices

COST SAVINGS
up to 30% on waste from
packaging materials



FILM SAVING UP TO 30%

thanks to our unique technology utilizing vacuum and gas injection in sealing phase which reduces the quantity of waste material to only 10 mm of lateral scrap, and only on bottom film, leading to an outstanding single package costs.



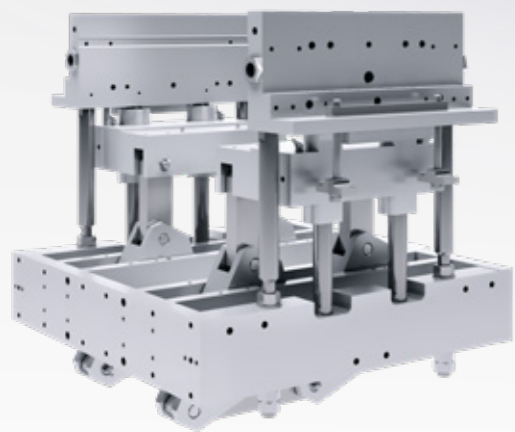
VERSATILE MACHINE

can be used with different plastic films (PET, PP, APET, PA/PE,...), aluminum, polythene cardboard, recycled materials, medical paper and Tyvek®.



LIFTING MECHANISM

with 4-post lifting unit which consistently guarantees high level of sealing quality due to evenly distribution of the sealing pressure.



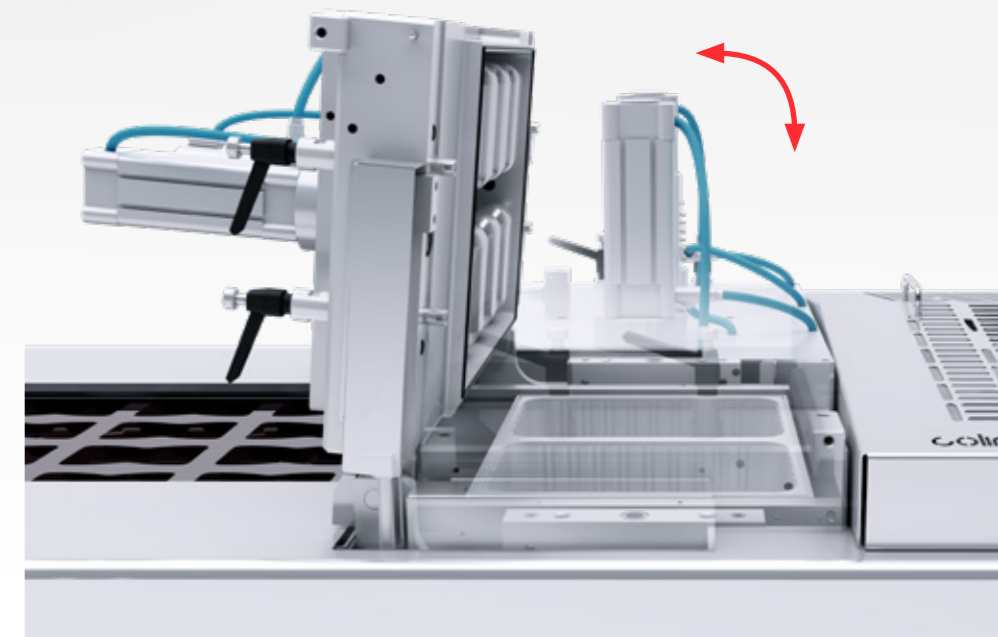
RESISTIVE OPERATOR PANEL

to allow a friendly HMI use in any working condition. The safety system detects hazards, stops the machine and activates the remote assistance service for faster reaction times.



HINGED CHAMBERS

with easy and tool-free access to allow the fastest format change, cleaning & maintenance operations.



TECHNOLOGIES

- Sealing
- Vacuum
- Modified atmosphere (MAP)
- Shrink
- Skinpack
- Multiple Indexes

COMPONENTS

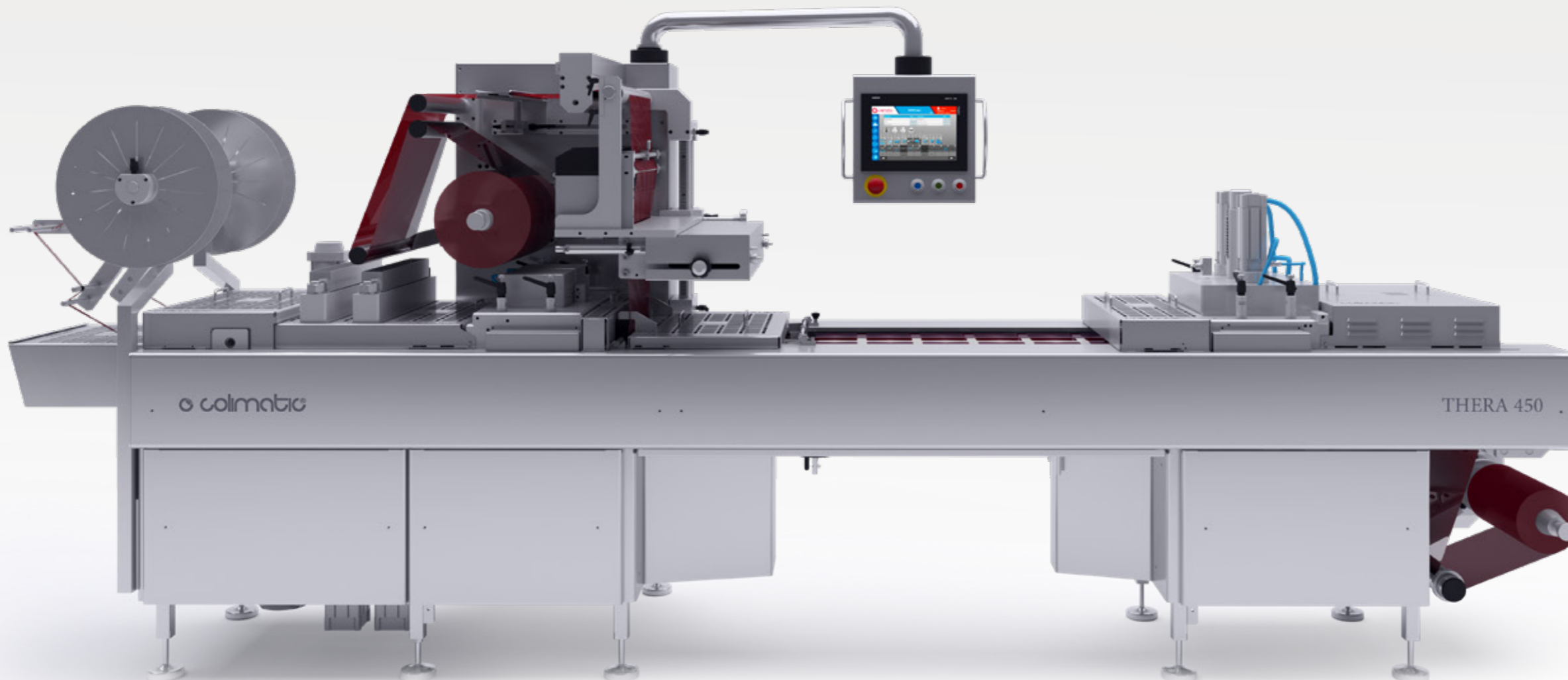
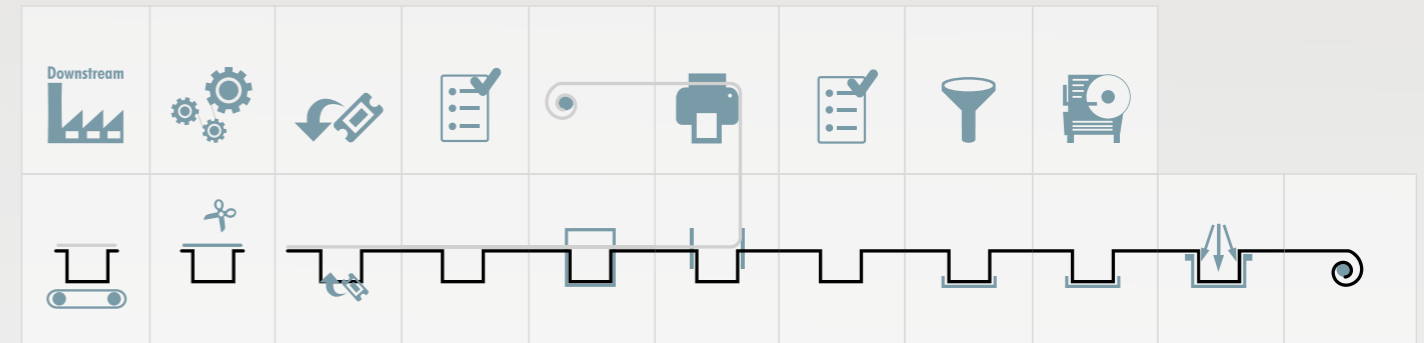
- Electrical: PLC Siemens
- Pneumatic: FESTO
- Vacuum Pumps: BUSCH
- Control interface: PLC Siemens

PERFORMANCE

- Production: Up to 20 cycles/min
- Film material: film thickness up to 800 my
- Top film reel max diam. 400 mm
- Bottom film reel max diam. 400 mm

TECHNICAL FEATURES

- Machine length: 4500 mm
- Machine width: up to 1100 mm
- Machine height: up to 2000 mm
- Loading area: according to index (free loading area up to 1000 mm max.)
- Bottom film width: up to 420 mm
- Top film width: up to 400 mm
- Max advancing index: up to 300 mm
- Pack max depth: up to 120 mm



OPTIONALS

NOTE

- External components integration service

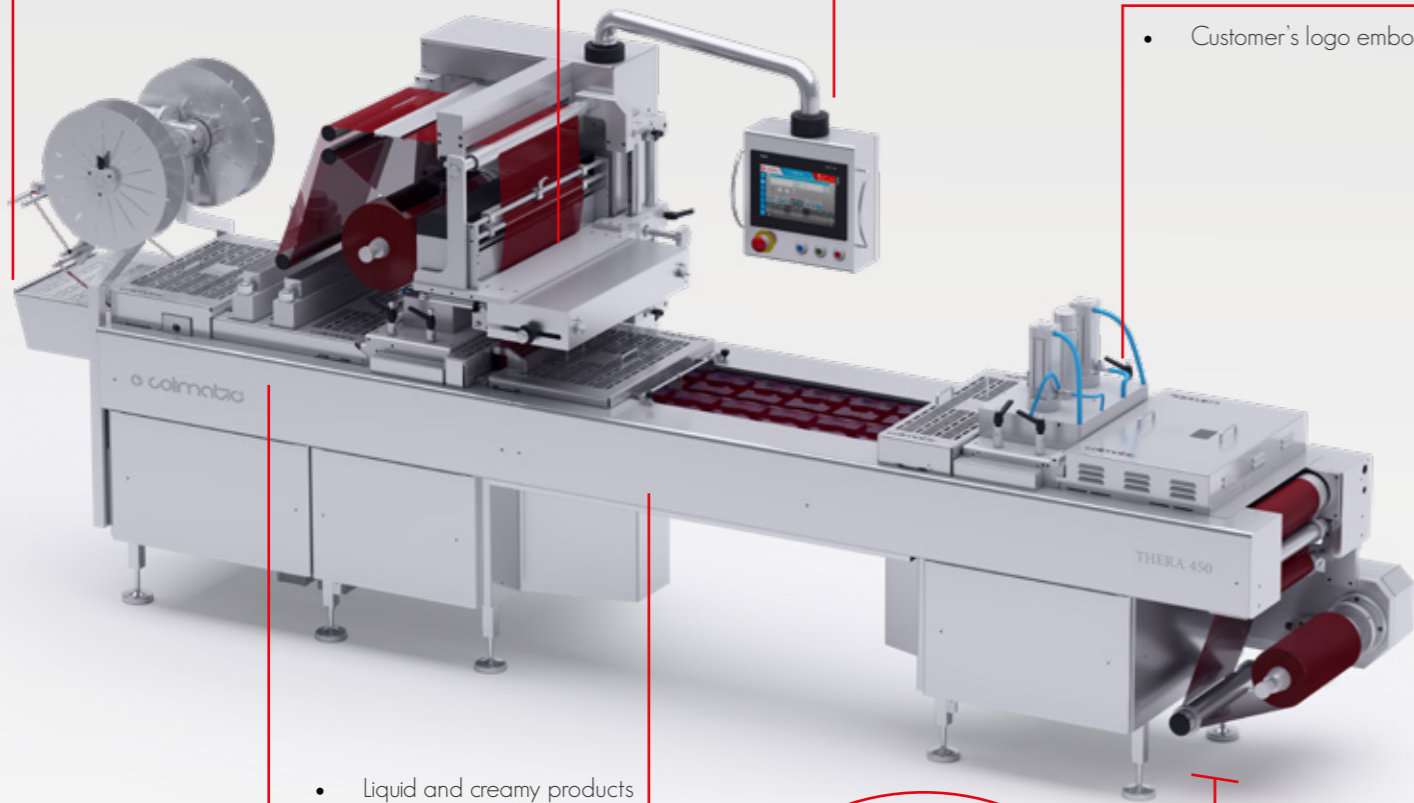
- Integration of external devices & systems.



- Aligning devices
- Output conveyors

- Easy managing of different indexes
- LISA® connect
- Product presence detection system

- Customer's logo embossed



- Liquid and creamy products dosing systems
- Automatic loading devices
- Pick&places systems
- Multihead weighers

- Hydraulic cutting systems
- Male-female matrix cuttings, for an unrivaled long-lasting quality

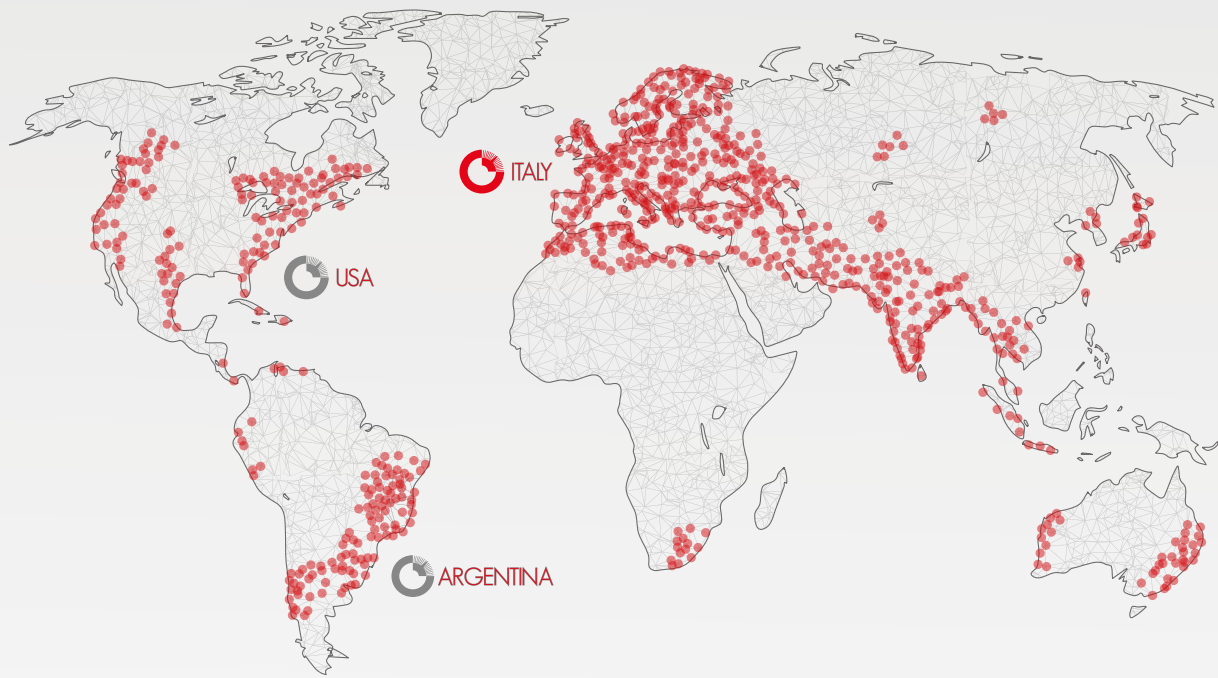


- Automatic lubrication

ITALIAN SOUL



GLOBAL ATTITUDE



SMALL
ENOUGH TO LISTEN
BIG ENOUGH
TO SERVE!



COLIGROUP S.p.A Via del lavoro A, 9 25032
CHIARI (BS) Italy
Phone - 39 030 7000761/2/3
Fax - 39 030 713370
Email: info@colimatic.it www.colimatic.com